

- ✓ Unlimited email addresses and a diary for each user
- ✓ No per-user cost. At all. Ever.
- ✓ All emails are content filtered in and out
- ✓ Easy to use, configurable webmail and diary means access from anywhere
- ✓ Can be used with any standard email and calendar client
- ✓ Easy to administer from anywhere through any web-browser

Email and Diary

Why pay for every email address or mailbox when you can have unlimited email addresses with the NetManager? There is NO per mailbox cost unlike most competitive products. Every user in your school or business can have their own email address. Every email sent or received can be content-filtered to block for inappropriate words or unwanted attachments.

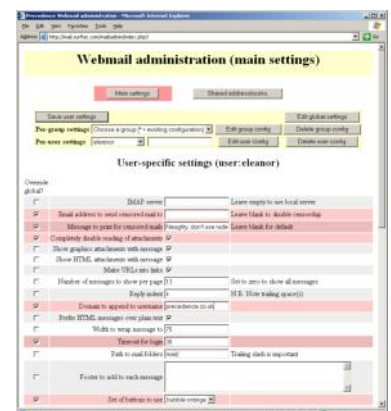
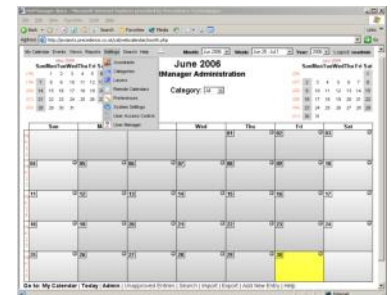
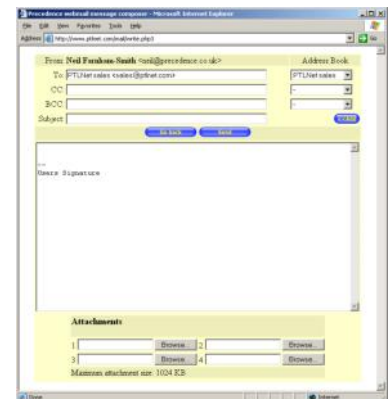
It is easy to set up aliases, redirections and mailing groups from the web-based administration pages. Similarly, it is simple to check logs to see exactly who has been emailing whom. Quotas can be applied to users' inboxes and their inboxes can be listed or searched by a number of criteria.

The NetManager links in with the rest of your network, so that users have the same username and password to access their email and diaries as they do to log in elsewhere. This makes it much easier to use, especially for younger pupils.

A simple-to-use, yet highly configurable web-based email and diary system allows your users to access their email and diaries from anywhere while keeping the data centrally so it can be easily backed up. The webmail system can be configured on a per-user or per-group basis meaning advanced features can be hidden from inexperienced users. Users can even be blocked from sending emails externally while still being able to send internally (or vice versa).

The diary system allows you to share your diary with others, schedule meetings, get email reminders and even allows non-users to have diaries (e.g. a meeting room or a minibus). Once again, your standard username and passwords are used and the web-based diary allows you access from anywhere.

As well as the web-based access methods, standard email (IMAP4/POP3/SMTP) and diary (ICS) clients can be used. These include Microsoft Outlook/Outlook Express/Entourage, Apple Mail/iCal and Mozilla Thunderbird/Calendar/Sunbird.



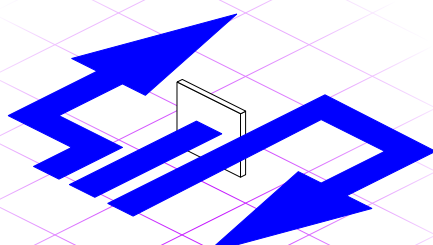
Why have a mailserver locally?

Using an external email provider (e.g. at your LEA) has many problems. For example, you double your administration time as you need to maintain separate lists of users (and thus maintain separate passwords), you have no control over filtering (if indeed there is any at all) and you are unable to see what emails have been sent.

Most emails are sent internally (perhaps even to the person next to you!). If you have a local mailserver, these will arrive instantly; if you do not, all email needs to be sent out and then back over your Internet connection eating up precious bandwidth.



Mobile phone accessing NetManager's webmail



- Advanced email control allows you to control every part of a pupil's email access on a per-user or per-group basis. Alter what they see. Alter who they can contact and who can contact them.



■ Mobile phone accessing NetManager's webmail

- ✓ Build a great intranet with webmail, diaries, polls, news pages and more
- ✓ Run common software such as Moodle
- ✓ Allow every user to create their own webpages
- ✓ Greatly speed up Internet access
- ✓ Powerful web filtering
- ✓ All web accesses in searchable logs

Local web-services

Having an intranet is a fantastic way to share information. Virtually every computer has web access as do mobile phones, digital TVs and PDAs. The NetManager provides many intranet tools which you can use to build a dynamic, up-to-date and accessible site such as email, diarying, web-polls and news tickers. Powerful access control allows you to password protect areas for certain groups or users and to restrict access to certain machines (e.g. internal vs external access).

Every user on the NetManager has their own personal webspace which allows them to publish their own work using any standard web editor (or even SurfYourOwn, our web-based software).

As the NetManager runs the world's most widely used webserving software, it's easy to download and install freely available and commonly used tools such as Moodle. Any software that says it requires Apache/PHP/MySQL/Perl will run straight out the box.

Whole websites can be captured and served from the NetManager as well as educational resources being provided for other, less powerful, caching solutions.

Proxying, caching and filtering

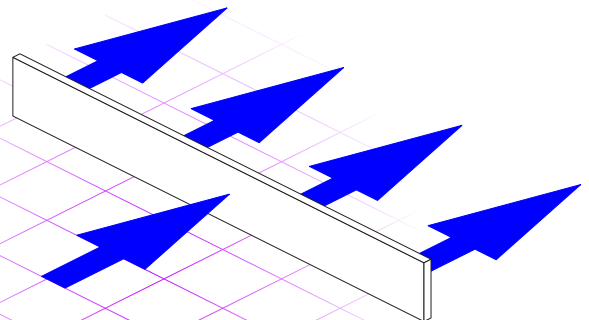
The NetManager speeds up your Internet access by keeping copies of all web pages viewed. This means that if the same page is fetched again, it loads instantly. This is particularly useful in schools where a whole class may be viewing the same site. The proxy logs every single access so that you can track who has been looking at what.

Web access can be filtered by a combination of a number of criteria, e.g. web address, client computer, user, time of day, type of access, keyword. For example, "library computers can only be used to access a small list of sites at lunchtime unless a staff member is using it".

Why have a proxy server locally?

Some LEAs and ISPs recommend you use their proxies. This is fine as a way to provide basic filtering, but means that every single website (even those viewed before) needs to be fetched over your Internet connection.

A local proxy server will massively speed up web access and furthermore, allows you to give different web access to different computers and users (e.g. you can block access in one room entirely). Most importantly, as every web access is logged, you can rigidly enforce an Acceptable Use Policy (AUP) and resolve any disputes about what has been viewed.



- Speeds your Internet access up by caching Internet data. This saves bandwidth and allows more computers to operate on a connection at the same time.

Make sure you know who has been looking at what and if it's inappropriate, make sure they don't access it again.

NetManager is also available via a network of local dealers and support agents.



Worldwide sales,
development and support

Address:

Precedence Technologies Ltd
120 Cambridge Science Park
Milton Road
Cambridge
CB4 0FZ

Tel: (0)8456 446 800

Fax: (0)8456 446 899

Email: sales@precedence.co.uk

WWW: <http://www.precedence.co.uk/>

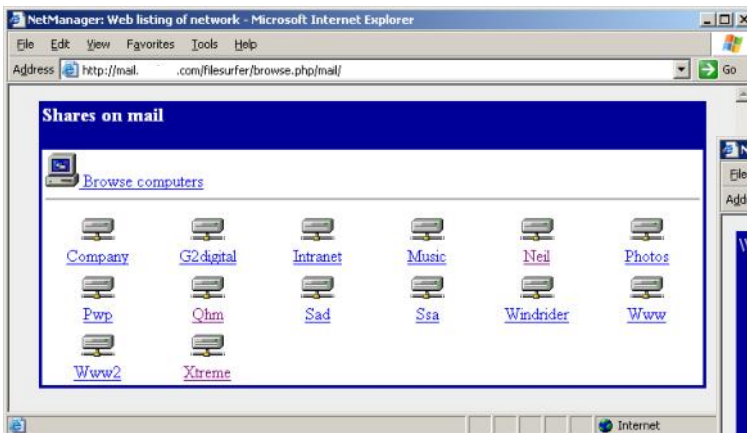
- ✓ Secure, remote access to files and resources from any web-browser
- ✓ Access your network from any client with no licence costs
- ✓ Powerful firewalling for the security of your whole network
- ✓ Encrypted services, so your data is safe from prying eyes
- ✓ Enforce network security and access controls

Remote access and security

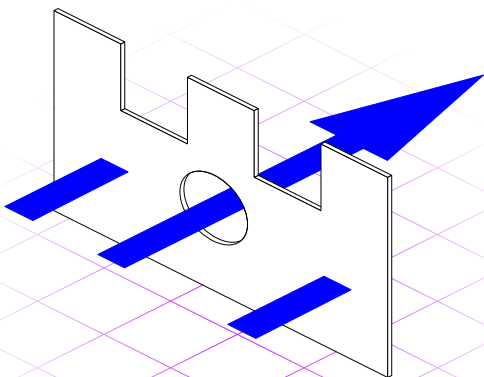
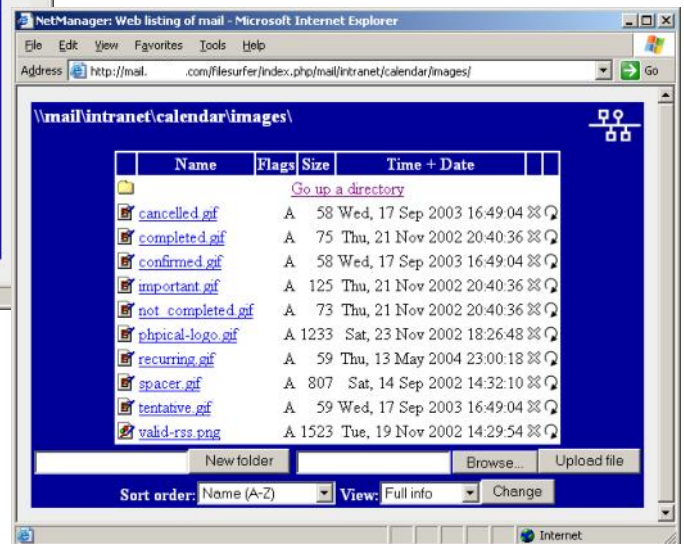
With the advent of always-on broadband connections, remote access to your network is becoming more important. Whether this is to provide access to remote workers, share internal resources with the public or to link multiple sites, any remote access should be secure, yet easy-to-use from anywhere.

The NetManager provides full firewall facilities and, in many installations, would be the only device connected directly to the Internet connection, thus allowing all other computers to benefit. Why maintain individual computer firewalls (which may interfere with valid network traffic and affect other software) when a central firewall offers more security and control for less cost? By controlling access, you can enforce filtered web access (to stop people bypassing your local filtering) and ensure that viruses and worms are not spread.

The simplest form of remote access is to allow access to intranet resources such as email, diaries and information pages. These can be secured by enabling HTTPS (aka SSL) so that all information including usernames and passwords is encrypted.



- FileSurfer allows simple, yet secure, remote access to shared resources on your network from any web-browser. The lists of shares and resource can be finely controlled.



- Central firewalling secures all your computers from attack meaning you don't need individual firewall software on each machine. Furthermore, it gives you tight control over both what can be accessed on the Internet by your computers and what information is shared between your curriculum and administration networks.

FileSurfer is an add-on to the NetManager that gives web-based access to file servers on site (either Unix or Microsoft Windows). FileSurfer allows users to access their home areas and other shared files using any web-browser. It does not require any plug-ins and is highly configurable. There are no per-user or ongoing licence fees.

Internal services from other servers can be presented to the outside world through the NetManager. For example, Citrix application servers (to give full desktop access) could be accessed without having to connect the servers directly to the Internet. Reverse Proxy technology allows you to present services from internal webservers to the outside securely using the NetManager to encrypt all the data.

For more complete network access (e.g. for a remote system administration) or to link multiple sites, the NetManager offers multi-platform SSL-based (i.e. firewall friendly) VPN services all for no extra cost. Don't waste money on proprietary VPN solutions that may not work with your Internet connection! Your remote workers could connect in with their laptops, access all network resources as though they were local including having (Voice-over-IP) VoIP phone calls diverted to them.

Modular

The NetManager is modular and easily expandable. There are a number of extra bolt-on products to add new features, plus if that's not enough, we will undertake custom development to add exactly the features you need.

File backup services

Tape backups are effective, but slow. Restoring a lost file can be slow and time consuming. The Backup Server option pack for the NetManager allows it to keep a mirror of data on a Microsoft Windows network. The backup server is kept up to date by only transferring the differences meaning that it places low impact on a network. It can also keep different generations, so that for example, you can immediately go back to snapshots of the previous day or the Monday before last. Generally, a backup server is provided as a separate server with a large amount of data storage (e.g. 2TB or 2048GB). This is installed separate from the rest of your servers.

File serving

The NetManager provides full file and print serving facilities to both Microsoft Windows and MacOS clients. Quota management is included. For Microsoft Windows, it can act as a domain controller supporting policies and roaming profiles. There are no client access licence requirements.

Instant messaging/chat rooms

Internet chat rooms are, quite rightly, a security and safety concern. However, instant messaging and chat rooms are a useful tool in many circumstances. For example, you can see when a user is logged on and active even if they are at the other end of your site (or even connected in remotely). Microsoft Windows and MacOS are both well supported as is encrypted secure remote access.

Network fax services

Provide centralised network fax services to all your computers with the NetManager Fax services option. All faxes in and out are stored and logged allowing easy recovery and viewing from any web-browser.

Voice-over-IP (VoIP) phone exchange

The NetManager can be used to provide full VoIP phone services supporting both standalone IP phones and PC-based soft phones. Services include call queuing, diversion, voicemail, music-on-hold, etc. Incoming and outgoing calls can be either by analogue phone line or over your Internet connection. Using a NetManager for this purpose will save thousands of pounds compared to proprietary phone systems (which usually charge for each number and feature).

Custom development

Precedence Technologies has undertaken many NetManager-based custom development projects. These include internal web-based order processing systems linking into e-commerce shopcart, datalogging and pupil monitoring.

If you have a need, just ask!

- ✓ File backup services
- ✓ File and print serving
- ✓ Safe instant messaging/chat rooms
- ✓ Network fax services
- ✓ VoIP phone exchange (PABX)
- ✓ Custom development



**Worldwide sales,
development and support**

Address:

Precedence Technologies Ltd
120 Cambridge Science Park
Milton Road
Cambridge
CB4 0FZ

Tel: (0)8456 446 800

Fax: (0)8456 446 899

Email: sales@precedence.co.uk

WWW: <http://www.precedence.co.uk/>

**NetManager is also
available via a network
of local dealers and
support agents.**